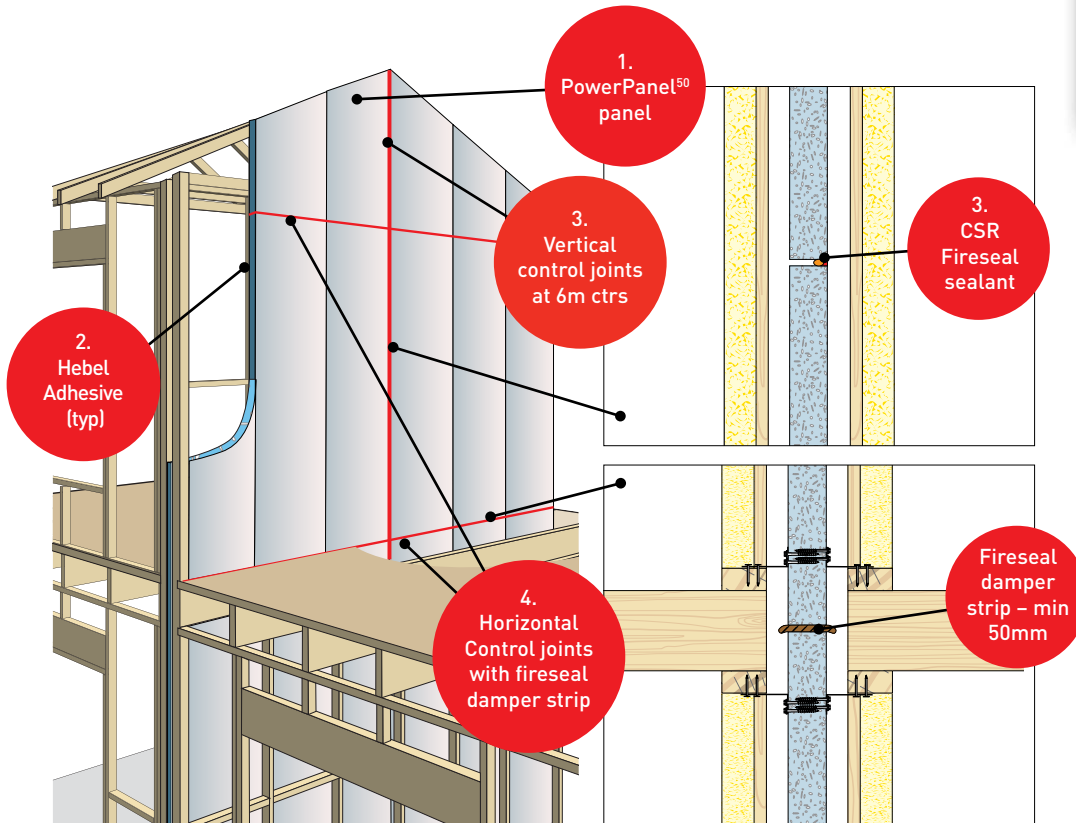


HEBEL POWERPANEL⁵⁰ INTERTENANCY WALL SYSTEMS

SIMPLE AND EASY TO INSTALL. CODEMARK FOR EASY COMPLIANCE



Hebel PowerPanel⁵⁰ has been developed and tested for low rise multi-residential intertenancy wall systems, which are warranted by CSR.



POWERPANEL⁵⁰ INTERTENANCY / PARTY WALL

The PowerPanel⁵⁰ Intertency Wall System consists of 50mm thick steel reinforced AAC panels installed vertically to timber or steel frame. Uses aluminium wall brackets for discontinuous construction and Hebel deflection head track for base connection.

- **Fire rating:** With plasterboard lining on both sides wall, FRR of 90/90/90 mins is achieved for a maximum total wall height of 7.2m. The FRR of the wall system is reduced to 60/60/60 mins for a maximum total wall height of up to 10m.
- **Acoustic:** Achieves minimum STC of 55 dependent on wall system configuration

Note: Refer to Hebel website or or contact Hebel Technical services for further details on performance of wall system.

POWERPANEL⁵⁰ STANDARD PANEL SIZES

50mm thick x 600mm wide x 2200mm, 2400mm, 2550mm, 2700mm and 3000mm long.

POWERPANEL⁵⁰ INTERTENANCY / PARTY WALLS - LOW RISE MULTI RESIDENTIAL

- Fast and easy system to install
- Easy to fire-rate with no need for fire-rated plasterboard between floor levels at joists and in roof space
- Narrow system wall width - starting at 230mm - with 70mm separation between stud frames across all systems
- Simple system componentry maximises construction efficiency
- Panels up to 3 metres in height installed vertically
- Easy to cut PowerPanel⁵⁰ panels onsite
- PowerPanel⁵⁰ wall construction not affected by wet or damp conditions
- Minimal onsite waste
- Environmentally responsible building material

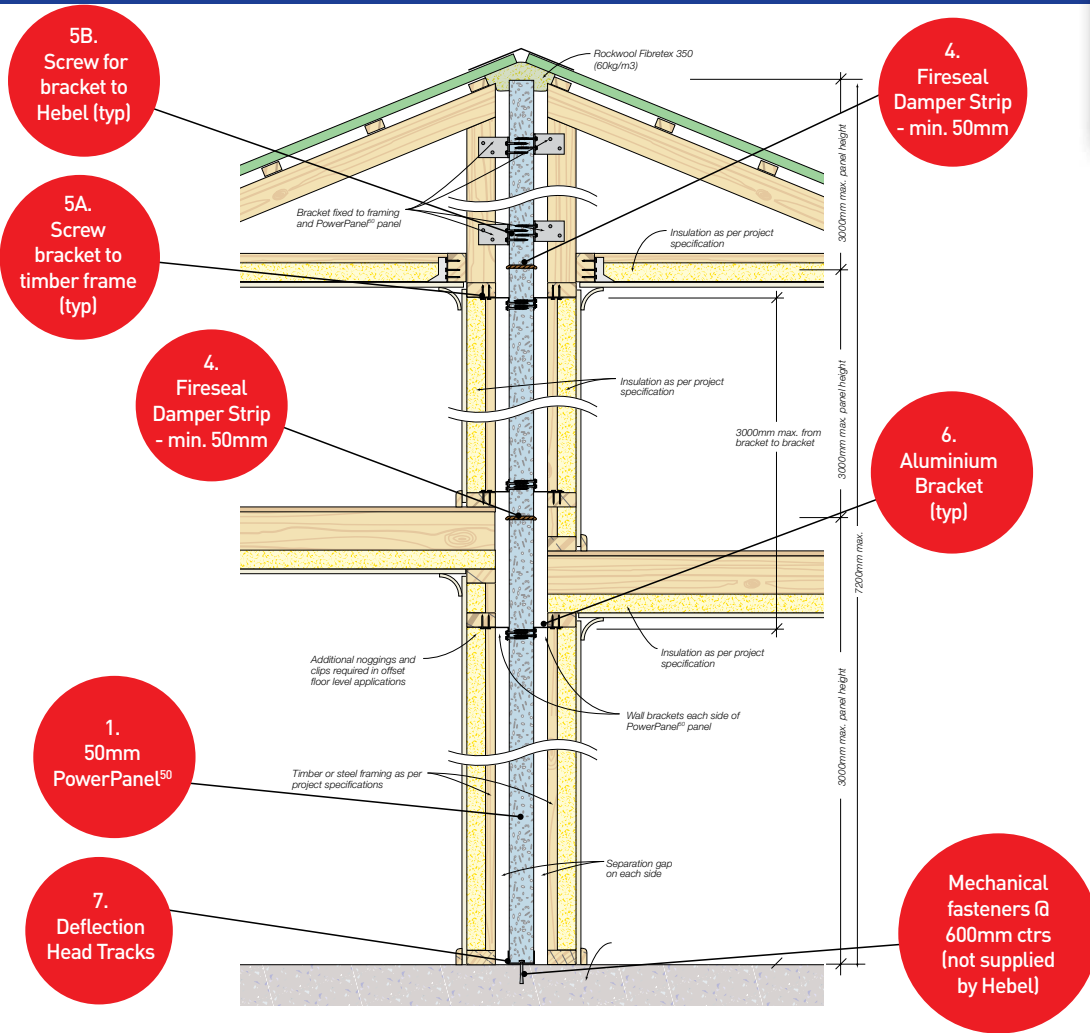


www.hebel.co.nz

CSR

HEBEL POWERPANEL⁵⁰ INTERTENANCY WALL SYSTEMS

SIMPLE AND EASY TO INSTALL. CODEMARK FOR EASY COMPLIANCE



ITEM	DESCRIPTION	LOCATION
1	Hebel PowerPanel ⁵⁰	Entire wall area
2	Hebel Adhesive	All panel joints (except control joints)
3	CSR FireSeal for vertical control joint	6m maximum ctrs along length of wall
4	Bradford fireseal damper strip	Horizontal control joints between panels
5A	Screw 12 - 11 x 35mm Hex Head type 17 / bracket	Fixing Aluminium Bracket to timber frame
5B	Screw 12 - 11 x 35mm Hex Head type 17 / bracket	Fixing Aluminium Bracket to Hebel
6	Aluminium Brackets (75 x 50 x 40mm)	Ground floor panels Panels on upper level & between trusses
7	Deflection Head Track (3m lengths)	Only at base of wall

For more information contact 0800 999 277 www.hebel.co.nz



HELIT229OCT23